



fuse

The Centre for Translational
Research in Public Health

Introducing Fuse

The Centre for Translational Research in Public Health

Sheena Ramsay, Director of Fuse



The Centre for Translational
Research in Public Health

What is Fuse

- A virtual centre of excellence in public health research, operating across the 6 universities in the North East and North Cumbria
- Started in June 2008 with UKCRC funding
- Working in partnership with policy makers, practitioners and the public: Local Government, OHID, UKHSA, voluntary sector
- USP: Translational Public Health research to enable findings to be understood and applied to public health issues
- Founding member of the NIHR School for Public Health Research (SPHR)





fuse
fuse, the Centre for Translational Research in Public Health, brings together the five North East Universities of Durham, Newcastle, Northumbria, Sunderland and Teesside



LiLaC is The Liverpool and Lancaster Universities Collaboration for Public Health Research



The University Of Sheffield.



UNIVERSITY OF CAMBRIDGE

LONDON SCHOOL OF HYGIENE & TROPICAL MEDICINE



Imperial College London



UNIVERSITY OF EXETER

University of BRISTOL

PHRESH

The Public Health REsearch for Health Consortium (PHRESH) includes researchers from three leading universities in the West Midlands; Universities of Birmingham, Warwick and Keele

- Established in 2012, the NIHR School for Public Health Research (SPHR) is a partnership between **nine leading academic centres** with excellence in applied public health research in England
- Work in partnership with policy and practice colleagues to deliver **high quality research to inform and shape policies** that deliver real change to **improve the health of the population and our planet**
- School renewed for 2022-2027 for £29.9 million
- Research programmes; Public mental health; Children, young people & families; Health inequalities; Healthy places, healthy planet.





The Centre for Translational
Research in Public Health

Mission and aims

Fuse's mission is to transform health and well-being and reduce **health inequalities** through the conduct of world-class **public health research** and its **translation** into value-for-money policy and practice

To achieve this our three broad aims are to:

1. Deliver world-class public health research
2. Build sustainable capacity
3. Build effective and lasting partnerships

Aims and achievements

1. Deliver world-class public health research

- >500 projects
- Published over 1,300 peer reviewed papers with over 35,000 citations
- >500 conference presentations

2. Build sustainable capacity

- >£300M in grant funding
- 50 Fuse-funded PhD students + researchers

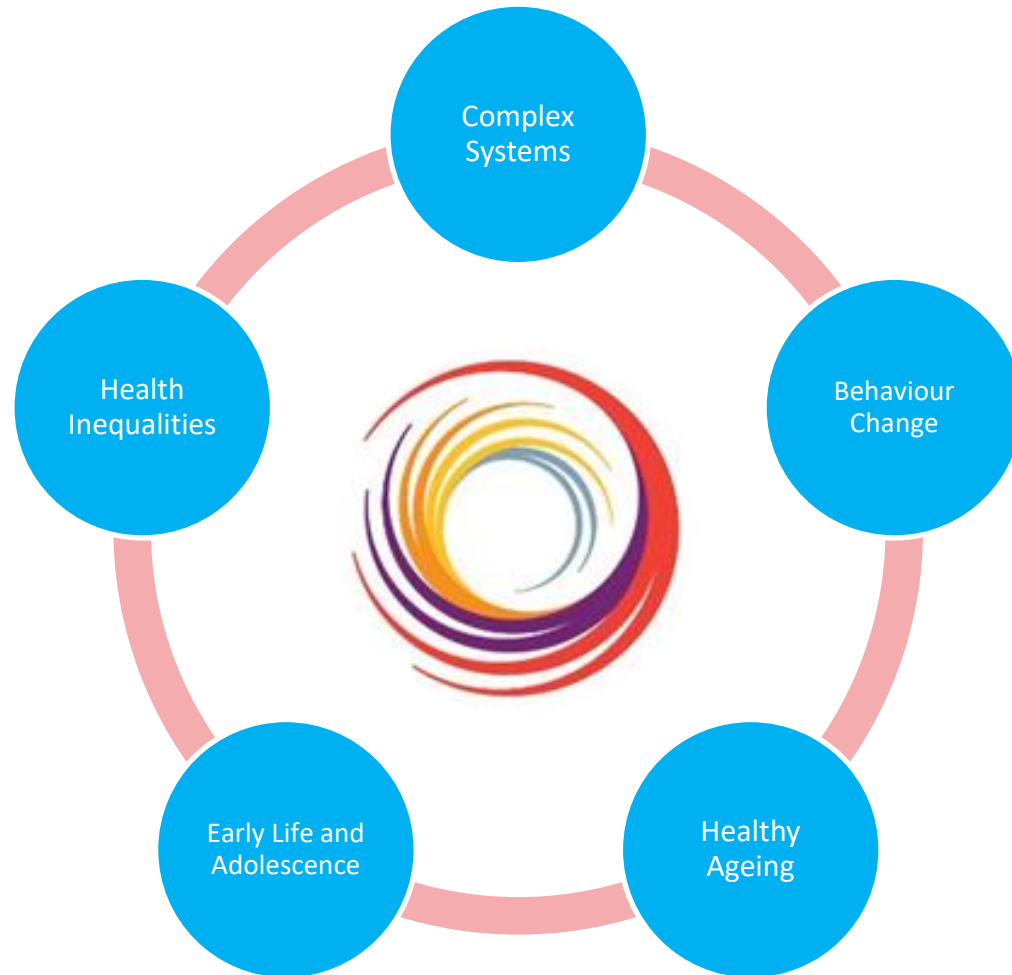
3. Build effective and lasting partnerships

- >500 public engagement events
- 1800 members from across all sectors



Award-winning blog and podcast

Fuse Research Clusters



askfuse

Cross-cutting core functions

- Translational Research
- Public Involvement and Engagement
- Communications

Networks

- Physical Activity Network
- Network for Health and Risk Communication for Public Health (hosted by NIHR SPHR)
- Embedded Researchers in Local Councils (ERIC)



The Centre for Translational
Research in Public Health

Inspiring and influencing others

Fuse

AskFuse - Fuse's responsive
research & evaluation service

NIHR School
for Public
Health
Research
(SPHR)

NIHR Policy
Research Unit
in Behavioural
Science

NIHR Applied
Research
Collaboration
(ARC) NENC

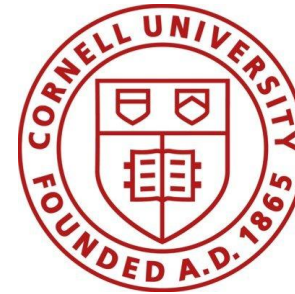
NIHR Health
Determinants
Research
Collaborations

NIHR Research
Support
Service

NIHR SPHR Public Health
Practice Evaluation
Scheme (PHPES)

NIHR Public Health
Intervention Responsive
Studies Teams (PHIRST)

International partners



Communications support to help you...

“Research is of no use unless it gets to the people who need to use it”

Professor Chris Whitty



- Tell others about your work
 - providing research findings to specific audiences using targeted channels and planned strategies (dissemination)
- Plan how to share your research with the people who can use it to effect change
 - two-way dialogue between researchers and evidence users so that knowledge can be shared (knowledge mobilisation)
- Make a difference
 - planning for impact using the processes of knowledge mobilisation and dissemination (pathways to impact)
- Share your learning, ideas and experience
 - creating informal spaces for discussion through events, blog and podcast.

... and to creatively make an impact

Tools to tell your research story

- Research practice events & meetings
- Policy briefs
- Blog posts
- Website fuse.ac.uk
- Social media [@fuse_online](https://twitter.com/fuse_online)
- e-newsletter
- Press/Media work
- Podcast

- Books and zines
- Video, animation and apps
- Infographics and visuals
- Theatre and comedy
- And much more...



Get in touch: m.welford@tees.ac.uk

Public Involvement and Engagement

Supporting you with your public involvement and engagement activities

- One-to-one support
- Tools to plan and record research
- Connecting you with relevant networks, organisations and contacts
- Collaboration with wider Fuse team e.g. to explore communications opportunities
- Making the most of the Fuse Public Partner Network

Get in touch: eleanor.anderson@ncl.ac.uk



The Centre for Translational
Research in Public Health

Fuse Public Partner Network

A dedicated resource for Fuse researchers and Associate Members. Anyone with an interest in public health, some time to spare and a willingness to share their views are [welcome to join](#).

- Over 75 members and counting
- Diversity of membership and lived experience (age range; employment status; ethnicity; health status; research experience etc.)
- Actively engaged members
- Includes community connectors too who have influence in their community and can help engage local people with health services



Involving public partners

Meaningfully embedding public voices throughout Fuse work:

- **Embedded roles** within project teams e.g. shaping research questions & surveys, systematic reviewing, interviewing participants, analysing and sharing findings, and reviewing plain language summaries.
- **Communications** e.g. [blog writing](#) and leading our [podcast](#) covering topics including mental health, hidden homelessness, energy drinks, substance use, and food insecurity.
- **Translating research** in creative and accessible ways e.g. children's book and [storytelling video](#).
- Contributing to **funding and awards panels**.
- Involvement in **events, workshops and conferences** e.g. planning, presenting, advising.
- Active role in **governance** structures e.g. membership and co-chairing [Fuse Public Involvement and Engagement Group](#).
- Collaboration with **community connectors** to reach wider community groups e.g. [Citizens UK](#).

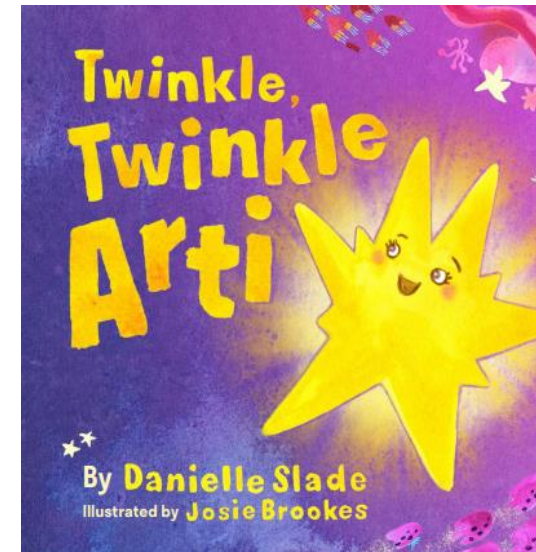
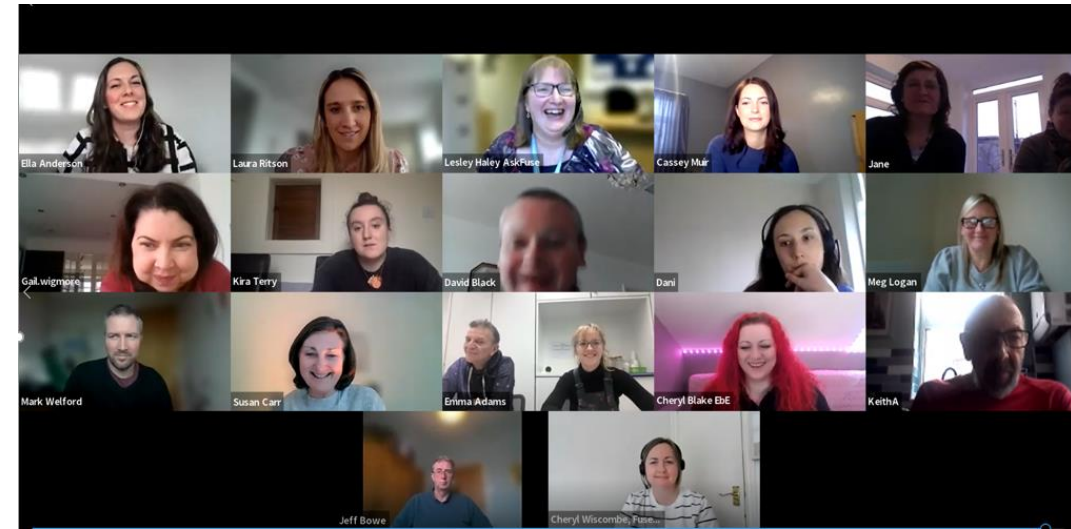


Image description: Image shows 19 smiling people across 17 separate Zoom tiles, taking part in the Fuse Public Partner Network Welcome Event; Twinkle Twinkle Arti book; Fuse podcast logo.

Nurturing connections & networks

- **National Institute for Health and Care Research (NIHR)**
- **Creating Connections**
- Voluntary Organisations' Network North East (**VONNE**)
- Voluntary Organisations Development Agency (**VODA**) North Tyneside
- **Charities and community groups** including Cedarwood Trust and Citizens UK
- Health Research Authority (**HRA**)
- Local authorities, HDRCs
- Universities and associated organisations, including **VOICE Global**
- ...and more!

NIHR | School for Public Health Research

NHS
Health Research Authority

VONNE
voluntary organisations' network north east

FULLFILLING LIVES



Voice 

NIHR | Innovation Observatory

NIHR | Applied Research Collaboration North East and North Cumbria

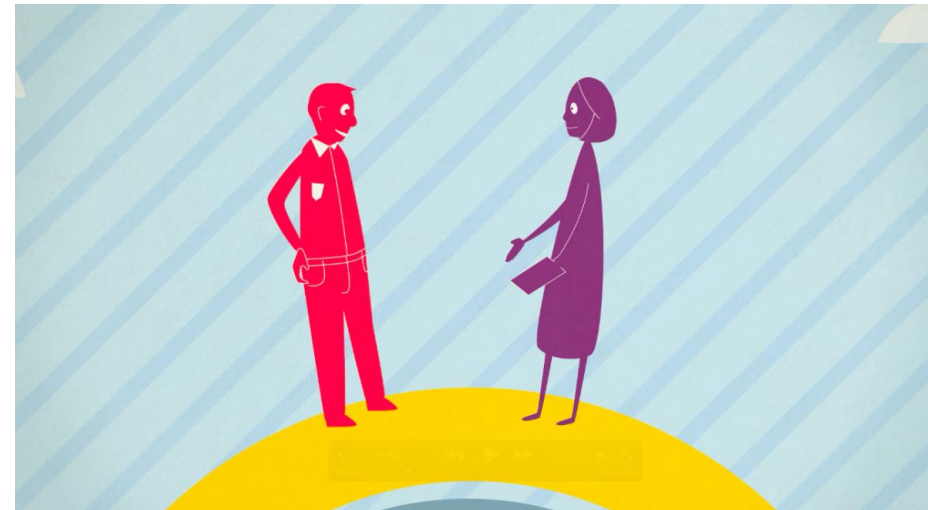
 **VODA**

citizensUK

How does AskFuse work?

- Match enquiries from practice partners with relevant Fuse researchers
- Long term collaborations
- Enable evidence to be used in practice
- Free initial conversation(s) to explore needs

"It starts with a conversation..."



Community Outreach service

- **What we are doing:** Evaluating the effectiveness of detecting people at risk of chronic/disabling health conditions and addressing their unmet needs.
- **How:** Mixed methods realist approach: analysis of reporting measures and available data, interviews with service providers and stakeholders.
- **Partners:** Health and Society Knowledge Exchange (HASKE), University of Cumbria (Grimwood, Snell); Northumbria University (Kamalakaran, Geddes, Forster, Croft); Local Authority Outreach Health and Wellbeing team.
- **Planned outputs:** Evaluation report with detailed co-produced and actionable recommendations, joint paper and Fuse briefs and blogs.
- **Timescales:** February-November 2024.





What does Fuse and AskFuse have to offer?

- Access **world-leading public health research and academics**
- Develop your **translational research skills**
- **Disseminate** your research findings
- Share and **co-produce knowledge** with academics, practitioners, policy makers and community members to **build relationships**
- Work with Experts by Experience through the Fuse Public Partner Network to **enhance your public involvement & engagement** goals and strategies
- Access **funding and training** opportunities, e.g. through the NIHR SPHR and NIHR Three Schools programme: Dementia, Mental Health, Prevention

Become a Fuse Member

Two membership categories:

- Fuse Network Member (info@fuse.ac.uk)
 - Anyone who wishes to be kept up to date on Fuse news and activity.
- Fuse Associate Member (more active role)
 - Staff or postgraduate research students from the North East and North Cumbria universities with a research interest in public health and wellbeing or knowledge exchange.
 - Staff in North East and North Cumbria organisations (local government, NHS or voluntary organisation for example) which improve public health and wellbeing or focus on knowledge exchange or translation of research evidence.



Complete a brief application form today by scanning the QR code or visit:

www.fuse.ac.uk/getinvolved

Fuse Core Team

- Eleanor Anderson, Public Involvement & Engagement Manager
eleanor.anderson@newcastle.ac.uk
- Peter van der Graaf, Knowledge Translation lead / AskFuse Research Manager
peter.graaf@northumbria.ac.uk
- Lesley Hayley, AskFuse Research Associate
l.haley@tees.ac.uk
- Agata Robertson, Fuse Manager
agata.robertson@newcastle.ac.uk
- Mark Welford, Communications Manager
m.welford@tees.ac.uk
- Cheryl Wiscombe, Fuse Administrator
cheryl.wiscombe@newcastle.ac.uk

